

BERLIN, AL STREET ASSESSMENT



MARCH 2021

PREPARED BY



**NORTH CENTRAL ALABAMA REGIONAL COUNCIL OF
GOVERNMENTS**

TABLE OF CONTENTS

PURPOSE	1
EXISTING CONDITIONS	1
ANNUAL AVERAGE DAILY TRAFFIC (AADT)	2
FUNCTIONAL CLASSIFICATIONS	2
MAINTENANCE	2
POTENTIAL FUNDING SOURCES	2
STREET ASSESSMENT MAP	3
STREET MATERIAL TYPE MAP	4
PHOTO PAGES	5

This street assessment was financed in part by the U.S. Department of Transportation (USDOT), Federal Highway Administration (FHWA), Federal Transit Administration (FTA), Alabama Department of Transportation (ALDOT), and local governments, and was prepared for the Rural Planning Organization (RPO) by the North Central Alabama Regional Council of Governments (NARCOG) in partial fulfillment of Task 2.4 of the FY 2021 RPO Work Program.



PURPOSE

As part of North Central Alabama Regional Council of Government's (NARCOG) Rural Planning Organization (RPO) work program, the Berlin Street Assessment has been prepared to provide a foundation and guidance for moving forward with needed street improvements. The Town of Berlin has identified street improvements as a priority. The Berlin Street Assessment will provide a foundation for the submission of a CDBG Planning Grant in 2021 and eventually the Town's very first Comprehensive Plan and its transportation element. The street assessment will also provide guidance for project prioritization based on existing street conditions and potential funding opportunities to implement the street improvements.

EXISTING CONDITIONS

There are approximately 35,758 feet, or 6.77 miles, of roads within the Berlin town limits. For this assessment, the conditions of these streets were broken into four categories: Good, Fair, Poor, and Bad. Of the 6.77 miles of streets, 3.18 miles are in Good condition, 0 miles are in Fair condition, 1.47 miles are in Poor condition, and 2.12 miles are in Bad condition.

U.S. Highway 278 (State Route 74) intersects with County Road 747 in the center of the town and runs west to the City of Cullman and east to the Town of Holly Pond. County Road 747 runs north through the town where it intersects with State Route 69 and south into rural Cullman County.

Approximately 88% (31,436 feet) of Berlin's streets are paved, 12% (4,322 feet) are gravel. The majority of the paved roads either consist entirely of chipseal or are extensively patched with chipseal.

Currently, the only sidewalks in Berlin are the few hundred feet that line the rights-of-way of two properties on either side of County Road 747 where it intersects with US Highway 278. There are also currently no crosswalks or other pedestrian infrastructure due to the, mostly, rural nature of the Town.

In general, the vehicle connectivity in Berlin is reasonably adequate, with the exception of the road closure of County Road 1614. The existing connectivity for vehicles is relatively sufficient given the cost of infrastructure and maintenance for any potential improvements. However, there is room for pedestrian and bicycle connectivity, specifically between neighborhoods and other land uses and amenities. This type of connectivity could include trails, sidewalks, multi-use paths, and other types of non-vehicle based linkages to promote pedestrian/bicycle/non-auto-based permeability of the Town for residents.

The improvement of streets has been identified as a need of the Town's Low- and Moderate-Income (LMI) residents. The Town recently received help from local legislators securing a \$100,000 grant for street improvements to County Road 1600, a major subdivision road shown in the Street Assessment Map as currently being in Bad condition. The improvements will consist of laying a new road base and chipseal and will be completed in 2021.

ANNUAL AVERAGE DAILY TRAFFIC (AADT)

The Annual Average Daily Traffic is measured by counters placed on certain roads by Traffic Monitoring section of the Alabama Department of Transportation (ALDOT). There are two counters located on the roads within the Berlin town limits. One is located on County Road 747 and the other is located on US Highway 278, which is also State Route 74. The most recent counts available are from 2019. The map on the following page shows the counts for 2018 and 2019 and shows an increase in the AADT count for each location.

FUNCTIONAL CLASSIFICATIONS

The Highway Functional Classification system defined by the Federal Highway Administration (FHWA) lists the four main classification categories for roadways as Principal Arterials, Minor Arterials, Collectors, and Locals. Principal Arterials and Collectors also have subcategories that are recognized in both urban and rural forms. The full list of the categories is:

1.) Principal Arterials

- a.) Interstate (Urban/Rural)
- b.) Other Freeways & Expressways (Urban/Rural)
- c.) Other (Urban/Rural)

2.) Minor Arterial

3.) Collector

- a.) Major Collector (Urban/Rural)
- b.) Minor Collector (Urban/Rural)

4.) Local

According to the most recent Highway Functional Classification System available from ALDOT, U.S. Highway 278 (State Route 74) is classified as a Rural Principal Arterial road, and County Road 747 is classified as a Rural Major Collector. The rest of the roads are classified as Local.

MAINTENANCE

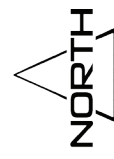
According to the County Engineer, the County maintains some roads, such as County Road 747, because both sides of the road are not within Berlin's limits; however, according to State law, if both sides of a road are within the municipality's limits, then the town has responsibility for maintaining the road. The County Engineer also said that the County does work on Berlin's roads, upon which Berlin then reimburses the County for the work. It is also most likely that ALDOT maintains US Highway 278 (State Route 74).

POTENTIAL FUNDING SOURCES

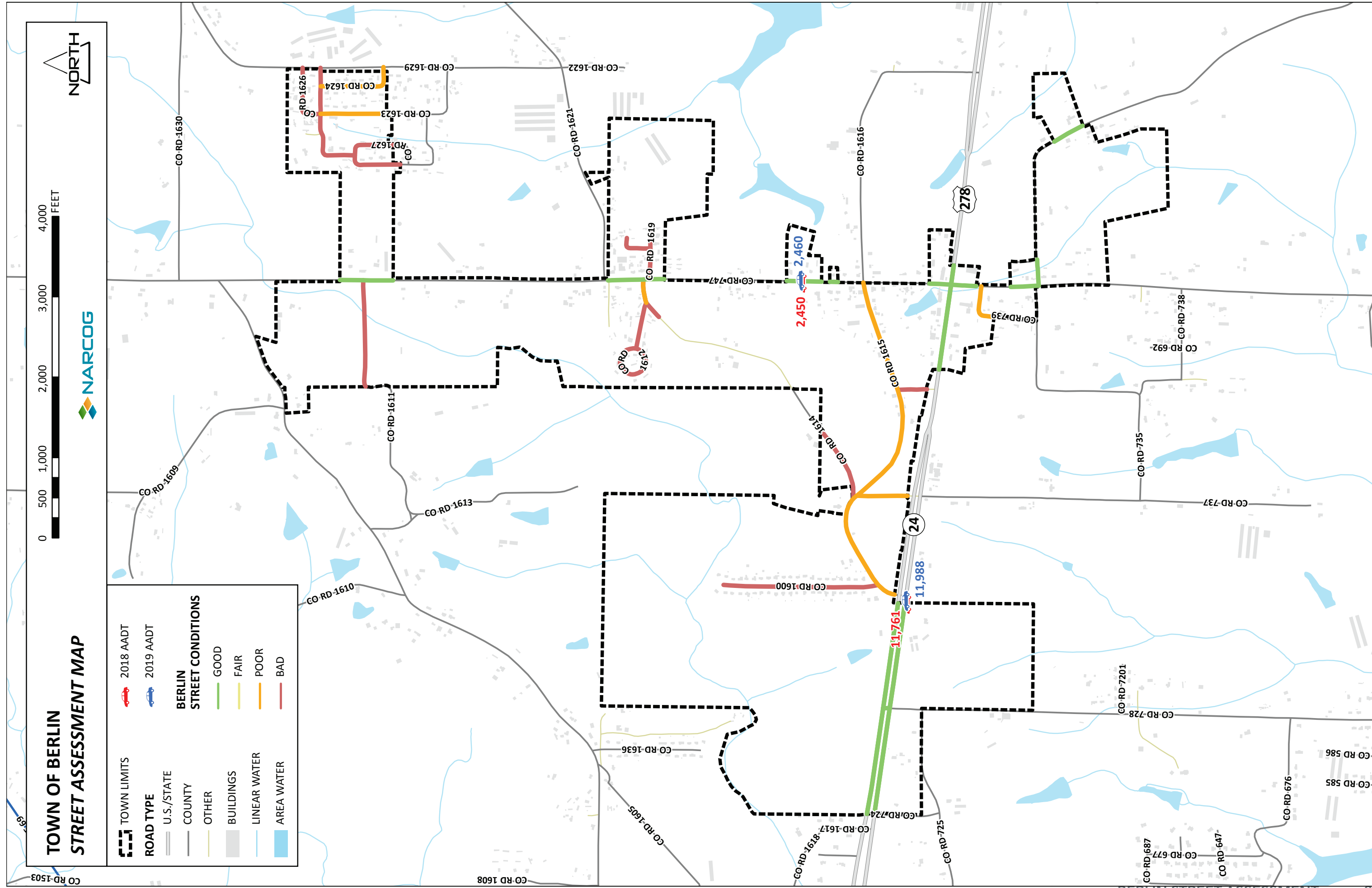
The Town of Berlin has a variety of potential funding sources available to assist with street improvements. The funding source should be determined by the scope of the project, cost, and the availability of local funds for the required match. Nearly all these sources will require some local funds as match. Some of the potential funding sources are listed below.

- Alabama Department of Transportation (ALDOT)
 - Alabama Industrial Access Road
 - Transportation Alternatives Program (TAP); sidewalks typically
- Appalachian Regional Commission (ARC)
- Community Development Block Grants (CDBG)
- Cullman County
- Rebuild Alabama Act (RAA)
- Local

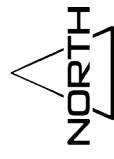
TOWN OF BERLIN STREET ASSESSMENT MAP



TOWN LIMITS	2018 AADT	GOOD
ROAD TYPE	2019 AADT	FAIR
U.S./STATE		POOR
COUNTY		BAD
OTHER		
BUILDINGS		
LINEAR WATER		
AREA WATER		



TOWN OF BERLIN STREET MATERIAL TYPE



	TOWN LIMITS
ROAD TYPE	
	U.S./STATE
	COUNTY
	OTHER
	AREA WATER
	LINEAR WATER
STREET MATERIAL TYPE	
	GRAVEL
	PAVED

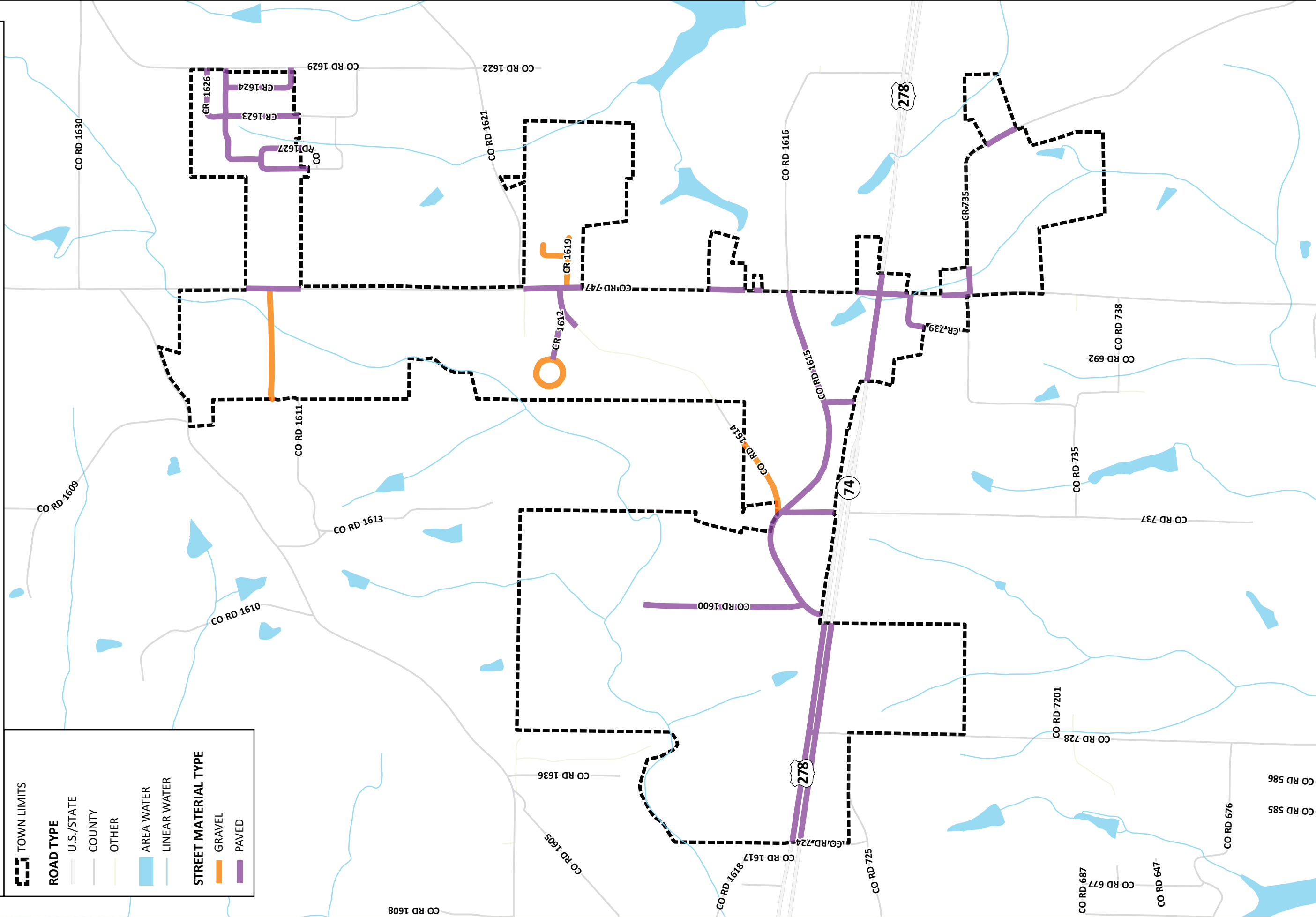


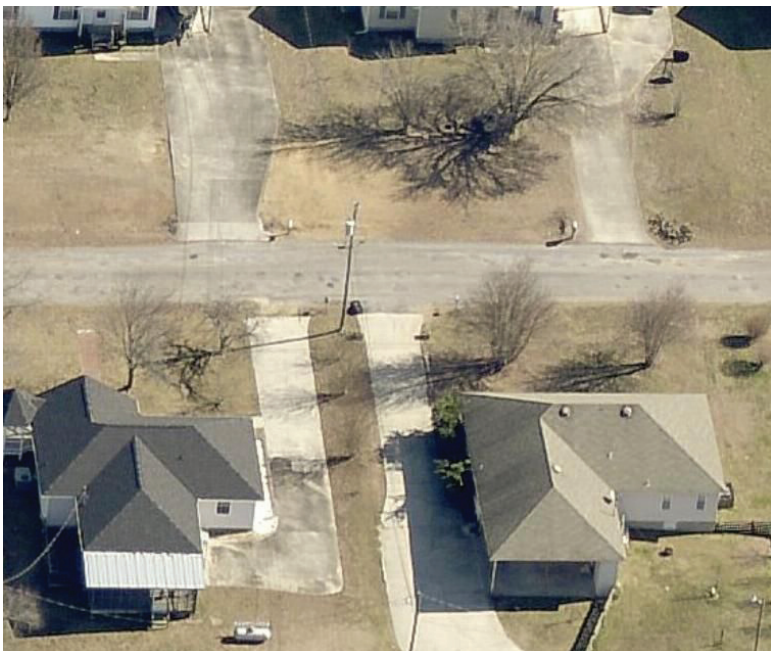
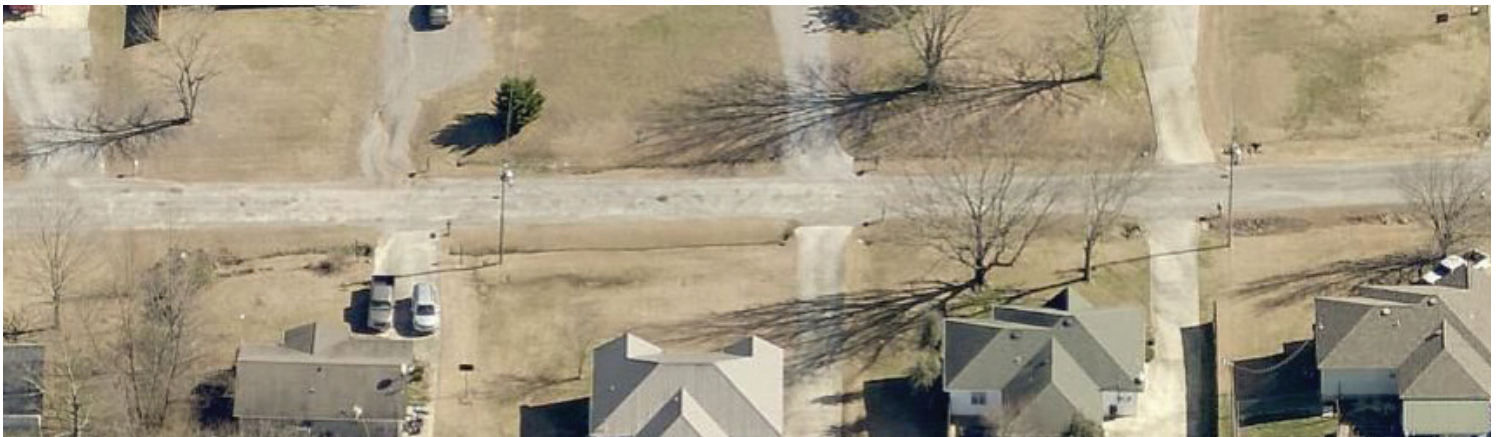
PHOTO PAGES

COUNTY ROAD 1615





COUNTY ROAD 1600



SOURCE: © All Pictometry, © 2019 EagleView, ConnectExplorer

