

COLONY, AL ***STREET ASSESSMENT***

JUNE 2022

PREPARED BY



**NORTH CENTRAL ALABAMA REGIONAL COUNCIL OF
GOVERNMENTS**

TABLE OF CONTENTS

PURPOSE	1
EXISTING CONDITIONS	1
ANNUAL AVERAGE DAILY TRAFFIC (AADT)	2
FUNCTIONAL CLASSIFICATIONS	2
MAINTENANCE	2
POTENTIAL FUNDING SOURCES	2
STREET ASSESSMENT MAP	3
STREET MATERIAL TYPE MAP	4
PHOTO PAGES	5

This street assessment was financed in part by the U.S. Department of Transportation (USDOT), Federal Highway Administration (FHWA), Federal Transit Administration (FTA), Alabama Department of Transportation (ALDOT), and local governments, and was prepared for the Rural Planning Organization (RPO) by the North Central Alabama Regional Council of Governments (NARCOG) in partial fulfillment of Task 2.4 of the FY 2022 RPO Work Program.



PURPOSE

As part of North Central Alabama Regional Council of Government's (NARCOG) Rural Planning Organization (RPO) work program, the Colony Street Assessment has been prepared to provide guidance for moving forward with needed street improvements. The Town of Colony has identified street improvements as a priority. The Colony Street Assessment will provide a foundation for project prioritization based on existing street conditions and submission of potential grant funding opportunities to implement the street improvements.

EXISTING CONDITIONS

There are approximately 63,281 feet, or 11.8 miles, of roads within the Colony town limits. For this assessment, the conditions of these streets were broken into three categories: Good, Fair, and Poor. Of the 11.5 miles of streets, 2.4 miles are in Good condition, 4.1 miles are in Fair condition, and 5.4 miles are in Poor condition.

Alabama State Route 91 borders the southern boundary of the town. Colony Road is the main road in the town and forms a loop that connects to AL 91 at both ends.

Approximately 78% (49,347 feet) of Colony's streets are paved, 22% (13,935 feet) are gravel or dirt. The majority of the paved roads either consist entirely of asphalt, chipseal, or are extensively patched with chipseal.

Currently, the only sidewalks in Colony are the approximately 3,379 feet that go through Colony Town Park as a walking trail, and the sidewalks that line Byars Road across from the park. There are also currently no crosswalks or other pedestrian infrastructure due to the, mostly, rural nature of the Town.

In general, the vehicle connectivity in Colony is reasonably adequate. The existing connectivity for vehicles is relatively sufficient given the cost of infrastructure and maintenance for any potential improvements.

ANNUAL AVERAGE DAILY TRAFFIC (AADT)

The Annual Average Daily Traffic is measured by counters placed on certain roads by the Traffic Monitoring section of the Alabama Department of Transportation (ALDOT). In 2019, there were two counters located on the roads within the Colony town limits. Both were located on State Route 91. In 2020, those counters were moved to locations outside of the town limits. The most recent counts available are from 2020. The map on the following page shows the counts for 2019 and 2020 which show a decrease in the AADT count for each location.

FUNCTIONAL CLASSIFICATIONS

The Highway Functional Classification system defined by the Federal Highway Administration (FHWA) lists the four main classification categories for roadways as Principal Arterials, Minor Arterials, Collectors, and Locals. Principal Arterials and Collectors also have subcategories that are recognized in both urban and rural forms. The full list of the categories is:

1.) *Principal Arterials*

- a.) Interstate (Urban/Rural)
- b.) Other Freeways & Expressways (Urban/Rural)
- c.) Other (Urban/Rural)

2.) *Minor Arterial*

3.) *Collector*

- a.) Major Collector (Urban/Rural)
- b.) Minor Collector (Urban/Rural)

4.) *Local*

According to the most recent Highway Functional Classification System available from ALDOT, AL State Route 91 is classified as a Rural Major Collector road. The rest of the roads are classified as Local.

MAINTENANCE













Town Council member Mary Parker is in charge of the Streets and Drainage department for the Town. According to the Town and the Cullman County Engineer, the Town pays the County to maintain all of the roads in the Town's limits. Thus far, the maintenance by the county has been on an as-need basis, where the Town submits a work order to the County and receives an invoice. Maintenance typically consists of small operations such as patching, mowing, and side cutting, for which the Town pays a flat rate of \$65/hour and \$75/hour for overtime, plus materials. The more complex operations like paving, ditching, and pipe replacement are charged per estimate approved by both parties. It is most likely that ALDOT maintains State Route 91.

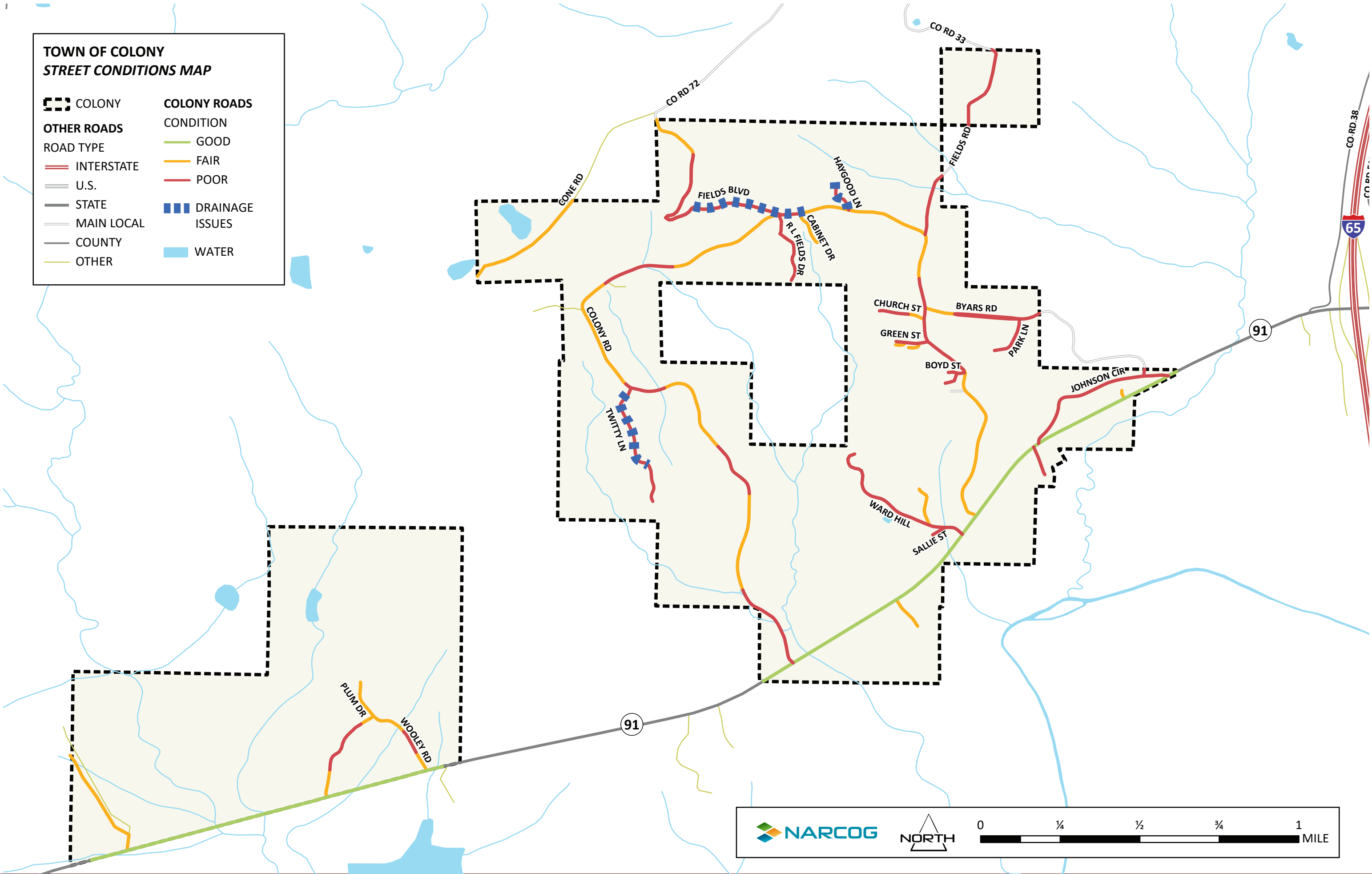
POTENTIAL FUNDING SOURCES

The Town of Colony has a variety of potential funding sources available to assist with street improvements. The funding source should be determined by the scope of the project, cost, and the availability of local funds for the required match. Nearly all these sources will require some local funds as match. Some of the potential funding sources are listed below.

- Alabama Department of Transportation (ALDOT)
 - Rebuild Alabama Act (RAA)
 - Transportation Alternatives Program (TAP); sidewalks typically
- Appalachian Regional Commission (ARC)
- Community Development Block Grants (CDBG)
- Cullman County
- Local

**TOWN OF COLONY
STREET CONDITIONS MAP**

 COLONY	COLONY ROADS
OTHER ROADS	CONDITION
 INTERSTATE	 GOOD
 U.S.	 FAIR
 STATE	 POOR
 MAIN LOCAL	 DRAINAGE ISSUES
 COUNTY	 WATER
 OTHER	



**TOWN OF COLONY
STREET TYPE & USE MAP**

- | | |
|--------------------|---------------------|
| COLONY | PARCELS |
| OTHER ROADS | SIDEWALKS |
| ROAD TYPE | COLONY ROADS |
| INTERSTATE | TYPE |
| U.S. | GRAVEL/DIRT |
| STATE | PAVED |
| MAIN LOCAL | 2019 AADT |
| COUNTY | 2020 AADT |
| OTHER | |

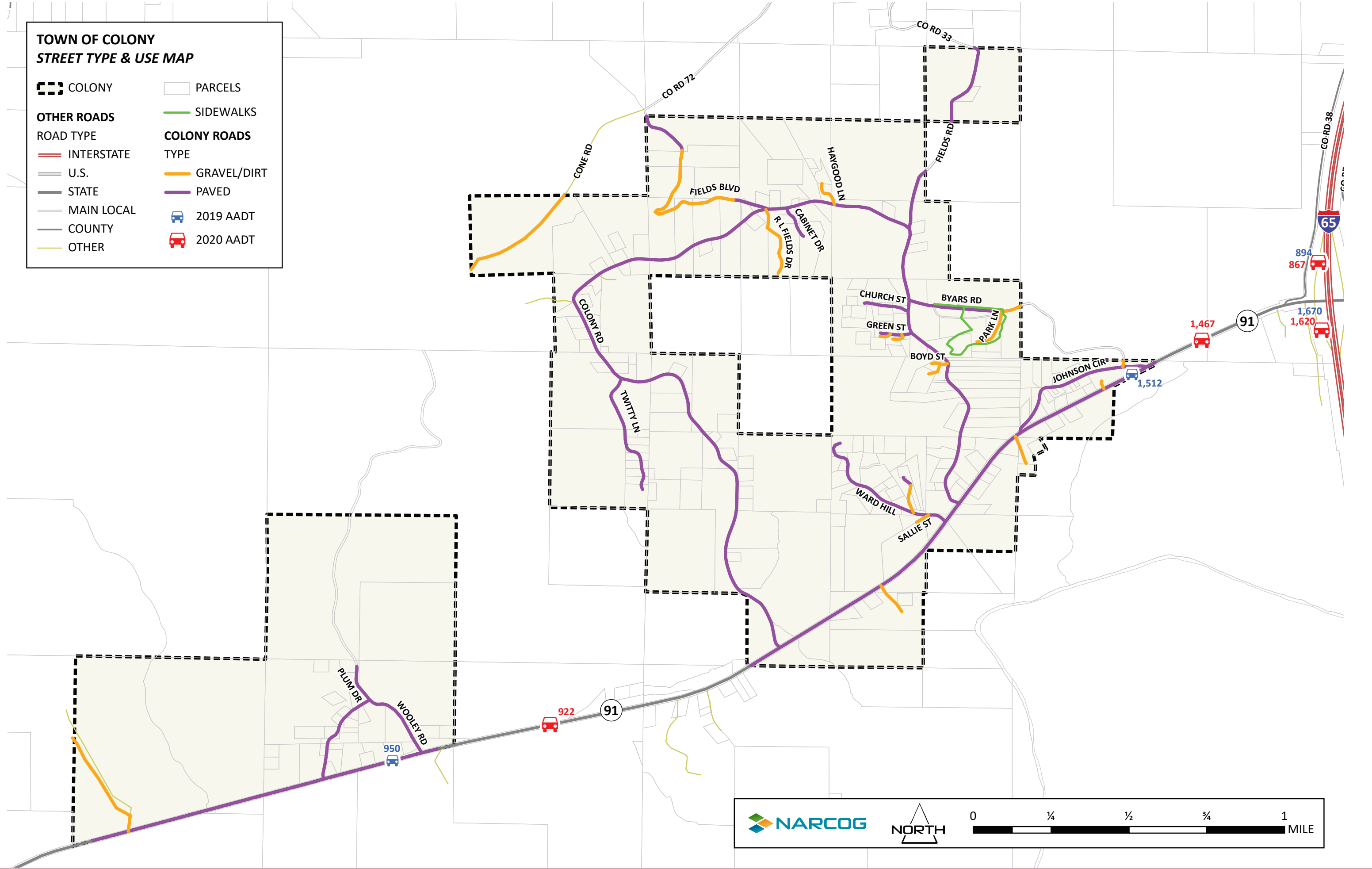


PHOTO PAGES

COLONY ROAD

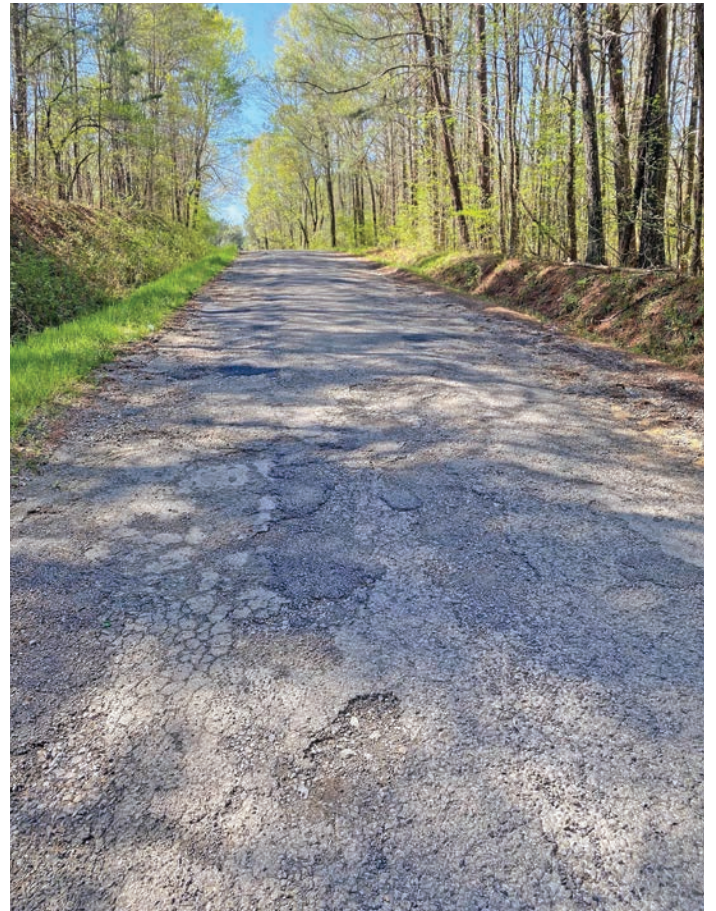




BYARS ROAD



FIELDS ROAD



FIELDS BOULEVARD (Co Rd 72)



JOHNSON CIRCLE





NARCOG
POSITIVELY IMPACTING
PEOPLE AND COMMUNITIES