

WEST POINT, AL STREET ASSESSMENT

JUNE 2023

PREPARED BY



**NORTH CENTRAL ALABAMA REGIONAL COUNCIL OF
GOVERNMENTS**

TABLE OF CONTENTS

PURPOSE	1
EXISTING CONDITIONS	1
ANNUAL AVERAGE DAILY TRAFFIC (AADT)	2
FUNCTIONAL CLASSIFICATIONS	2
MAINTENANCE	2
POTENTIAL FUNDING SOURCES	2
STREET ASSESSMENT MAP	3
STREET MATERIAL TYPE MAP	4
PHOTO PAGES	5

This street assessment was financed in part by the U.S. Department of Transportation (USDOT), Federal Highway Administration (FHWA), Federal Transit Administration (FTA), Alabama Department of Transportation (ALDOT), and local governments, and was prepared for the Rural Planning Organization (RPO) by the North Central Alabama Regional Council of Governments (NARCOG) in partial fulfillment of Task 2.4 of the FY 2023 RPO Work Program.



PURPOSE

As part of North Central Alabama Regional Council of Government's (NARCOG) Rural Planning Organization (RPO) work program, the West Point Street Assessment has been prepared to provide a foundation and guidance for moving forward with needed street improvements. The Town of West Point has identified street improvements as a priority. The West Point Street Assessment will provide a foundation for the submission of a potential CDBG Planning Grant in 2024 and its transportation element. The street assessment will also provide guidance for project prioritization based on existing street conditions and potential funding opportunities to implement the street improvements.

EXISTING CONDITIONS

There are approximately 85,400 feet, or 16.2 miles, of named roads within the West Point town limits. For this assessment, the conditions of these streets were broken into four categories: Good, Fair, Poor, and Bad. Of the 16.2 miles of streets, 7.9 miles are in Good condition, 4.8 miles are in Fair condition, 2.9 miles are in Poor condition, and 0.6 miles are in Bad condition.

State Route 157 intersects with County Road 1242 in the center of the town and runs southeast to the City of Cullman and northwest to Morgan County. County Road 1117 (Bethel Battle Ground Road) runs south through the town and into the rural county where it intersects with and ends at US Highway 278 (State Route 74). County Road 1141 starts at State Route 157 on the northwest edge of the town limits and runs southeast through the town and into the rural county where it ends at State Route 74.

Approximately 7.8% (6,620 feet) of West Point's streets are gravel, 92.2% (78,740 feet) are paved with asphalt, or chipseal in the case of County Road 1243.

Currently, there are approximately 5,430 feet of sidewalks in West Point. They line the rights-of-way of County Roads 1242 and 1141 from the Community Center baseball fields to the southwestern baseball field. There is also a half-mile walking trail around the baseball field. Currently, most of the crosswalks are along County Road 1141 around the Elementary and High Schools due to the, mostly, rural nature of the Town. There is the potential for a connection from the existing sidewalk system on the north side of County Road 1141 to continue up the west side of County Road 1242 and connect to the Dale's convenience store and gas station.

In general, the vehicle connectivity in West Point is reasonably adequate for a rural community given the cost of infrastructure and maintenance for any potential improvements. However, there is room for pedestrian connectivity and improvements, specifically between the schools, community facilities, and commercial developments. This type of connectivity could include trails, sidewalks, multi-use paths, and other types of non-vehicle based linkages to promote pedestrian/bicycle/non-auto-based opportunities for the Town for residents. The Town has expressed interest in a pedestrian bridge at the schools.

ANNUAL AVERAGE DAILY TRAFFIC (AADT)

The Annual Average Daily Traffic is measured by counters placed on certain roads by Traffic Monitoring section of the Alabama Department of Transportation (ALDOT). All of the counters around West Point are portable, therefore, some have moved from year to year. According to the most recent counts from 2021, there is one counter on County Road 1114, just outside the western town limits and two counters located between and just outside of the town limits on State Route 157(SR 157). The AADT on SR 157 is higher on the southeastern portion towards Cullman and I-65. The other counters within the town limits are two counters on Country Road 1141 and one counter on County Road 1242. The map on the following page shows the counts for 2020 and 2021 and shows an increase in the AADT count for most locations.

FUNCTIONAL CLASSIFICATIONS

The Highway Functional Classification system defined by the Federal Highway Administration (FHWA) lists the four main classification categories for roadways as Principal Arterials, Minor Arterials, Collectors, and Locals. Principal Arterials and Collectors also have subcategories that are recognized in both urban and rural forms. The full list of the categories is:

1.) Principal Arterials

- a.) Interstate (Urban/Rural)
- b.) Other Freeways & Expressways (Urban/Rural)
- c.) Other (Urban/Rural)

2.) Minor Arterial

3.) Collector

- a.) Major Collector (Urban/Rural)
- b.) Minor Collector (Urban/Rural)

4.) Local

According to the most recent Highway Functional Classification System available from ALDOT, State Route 157 is classified as a Rural Principal Arterial road; County Roads 1242, 1141, and 1117 are classified as a Rural Major Collectors; and the section of County Road 1141 from the intersection of County Road 1242 eastward is classified as a Rural Minor Collector. The rest of the roads are classified as Local.

MAINTENANCE

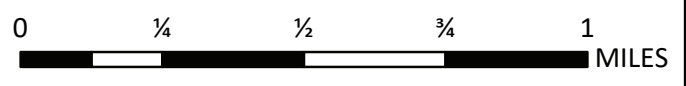
According to the Cullman County Engineer, the County maintains some local roads because both sides of the road are not within West Point's limits; however, according to State law, if both sides of a road are within the municipality's limits, then the town has responsibility for maintaining the road. The County Engineer also said that the County does work on West Point's roads, upon which West Point then reimburses the County for the work. ALDOT maintains State Route 157.

POTENTIAL FUNDING SOURCES

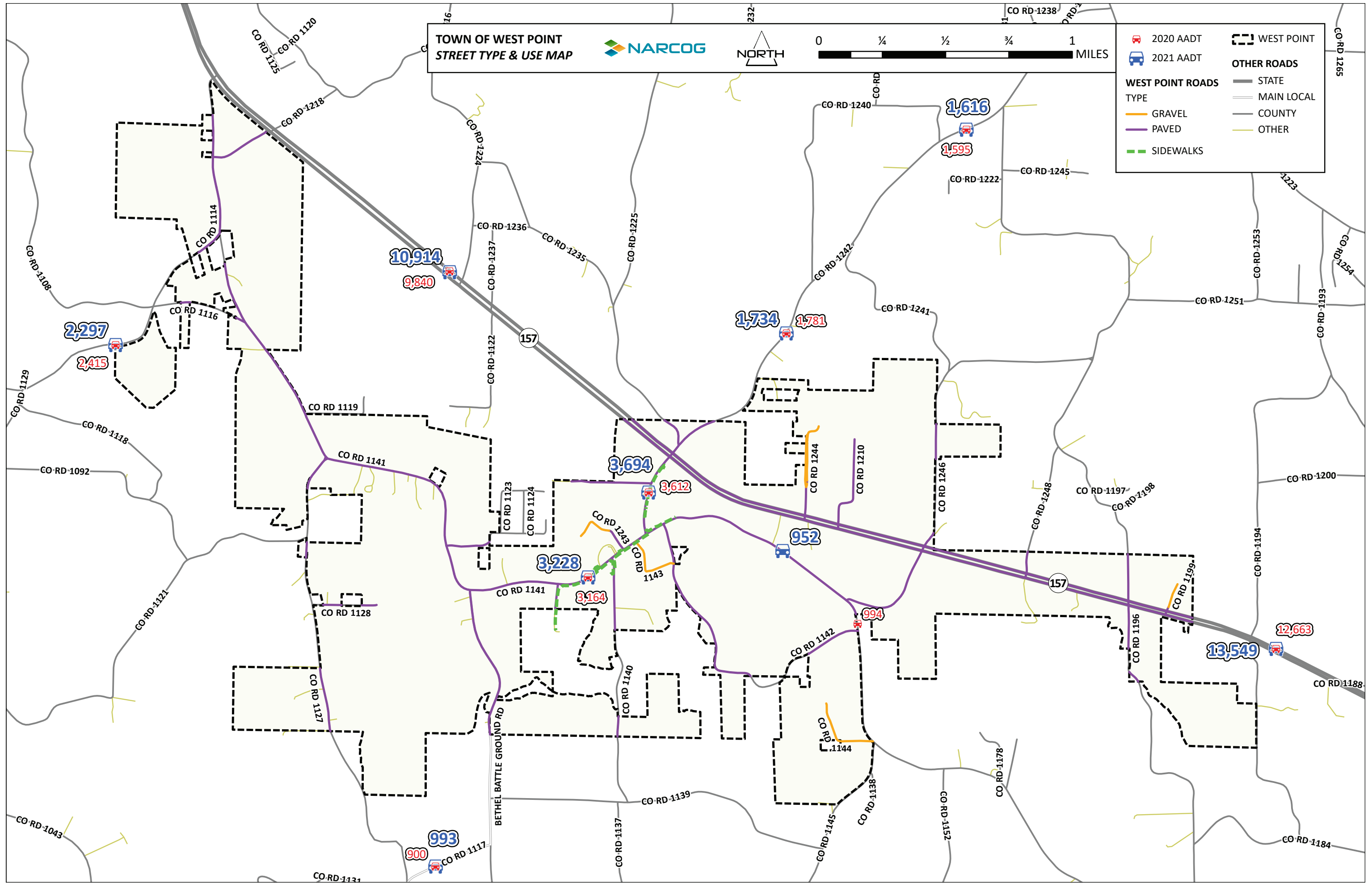
The Town of West Point has a variety of potential funding sources available to assist with street improvements. The funding source should be determined by the scope of the project, cost, and the availability of local funds for the required match. Nearly all these sources will require some local funds as match. Some of the potential funding sources are listed below.

- Alabama Department of Transportation (ALDOT)
 - Alabama Industrial Access Road
 - Transportation Alternatives Program (TAP); sidewalks typically
 - Rebuild Alabama Act (RAA)
- Appalachian Regional Commission (ARC)
- Community Development Block Grants (CDBG)
- Local (match/general funds)

TOWN OF WEST POINT
STREET TYPE & USE MAP



2020 AADT	WEST POINT
2021 AADT	OTHER ROADS
WEST POINT ROADS	STATE
TYPE	MAIN LOCAL
GRAVEL	COUNTY
PAVED	OTHER
SIDEWALKS	



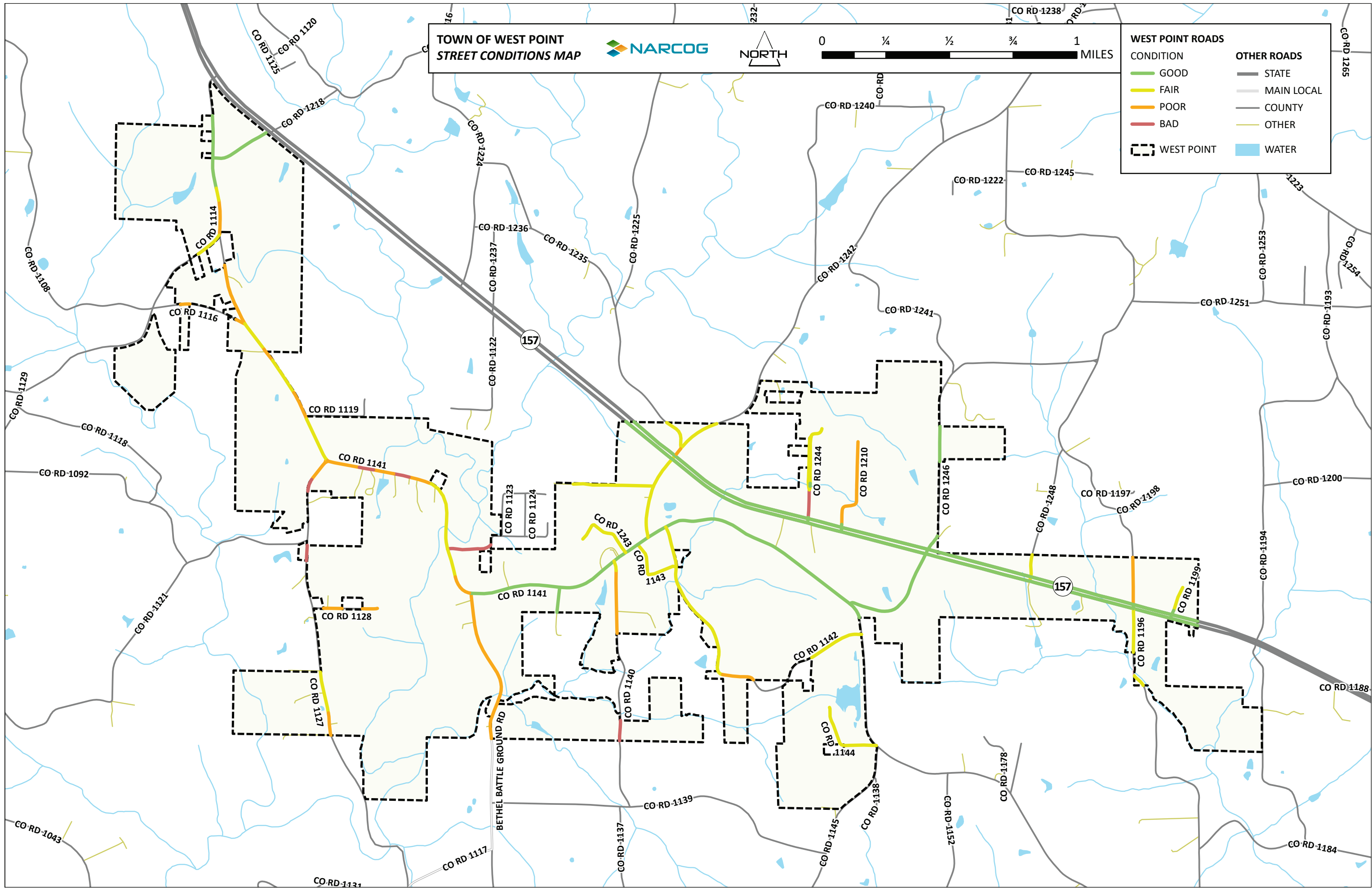


PHOTO PAGES

COUNTY ROAD 1141



Pedestrian infrastructure near the schools



Looking south at intersection with County Road 1140

COUNTY ROAD 1141 (CONTINUED)



Looking east between the intersection of County Road 1127 and the Methodist Church

COUNTY ROAD 1127



Looking east at the intersection with County Road 1128

COUNTY ROAD 1242



Looking north from intersection with County Road 1141



Looking north towards State Route 157

COUNTY ROAD 1244



